

Wireless LAN Setup Manual

—Windows Vista—

Computing and Networking Center
<http://www.cc.u-ryukyu.ac.jp>
admin@cc.u-ryukyu.ac.jp

Wireless LAN Setup Manual (Windows Vista)

Contents

- 1. Install SecureW2 P.1
- 2. Setup for Wireless LAN (Initialization) P.3
- 3. Setup for Wireless LAN (Second time) P.12

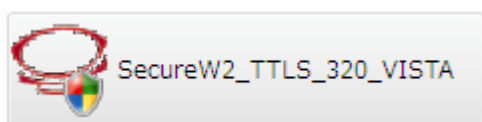
Please read below before setup

※Please log in with User ID which have administrator authority.

※If you use Wireless LAN card which insert the outside of computer, you have to install driver.

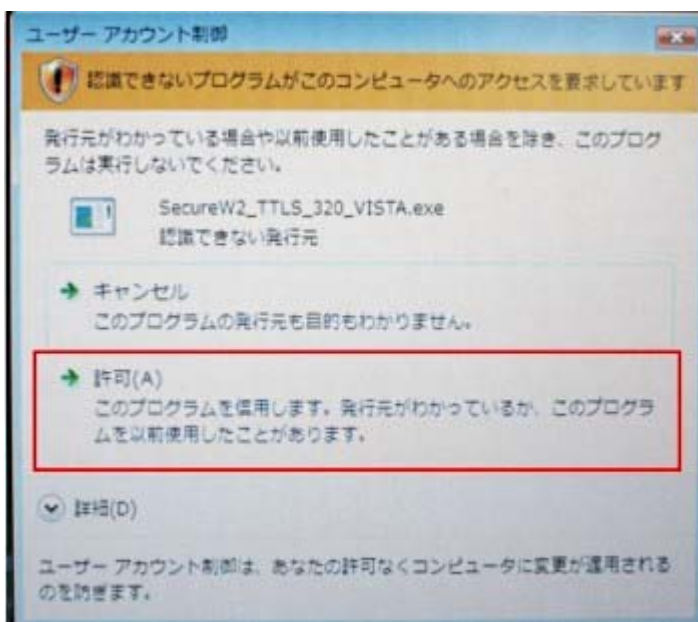
When you install driver please see the Manual.

1. Install SecureW2

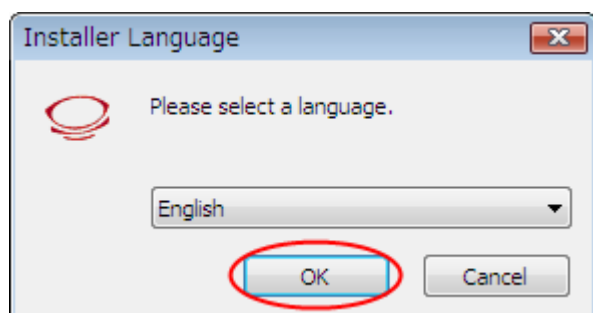


Double click “SecureW2_TTLS_xxx_VISTA” and open the install screen.

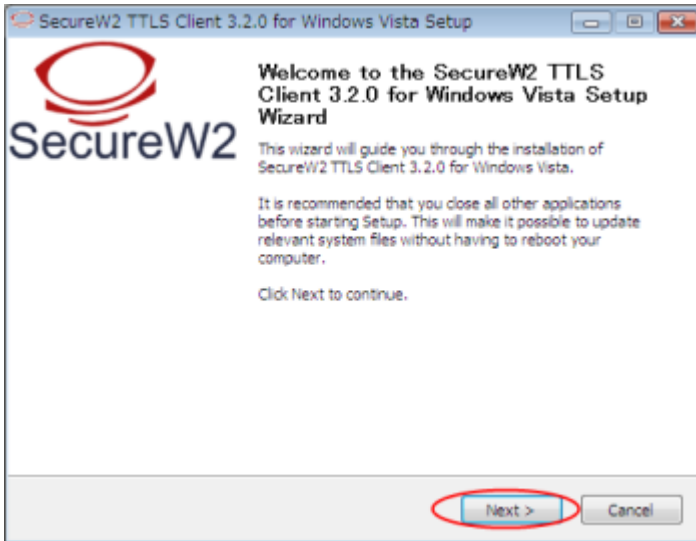
※You can download “SecureW2” from <http://www.securew2.com/products/>.



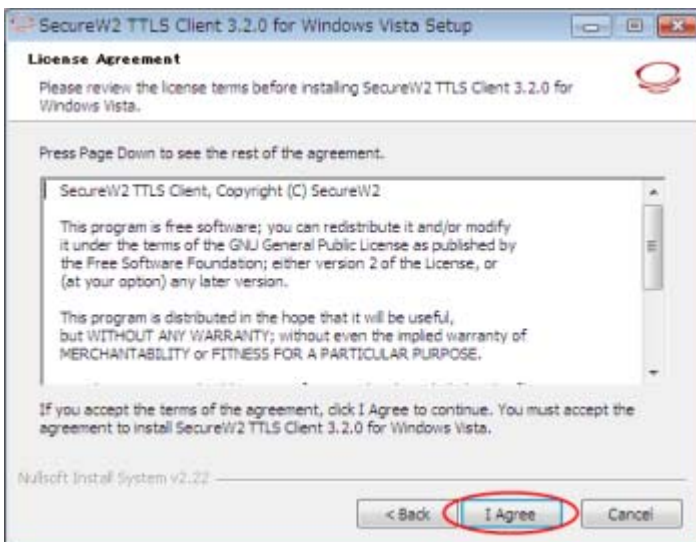
Click the “許可.”



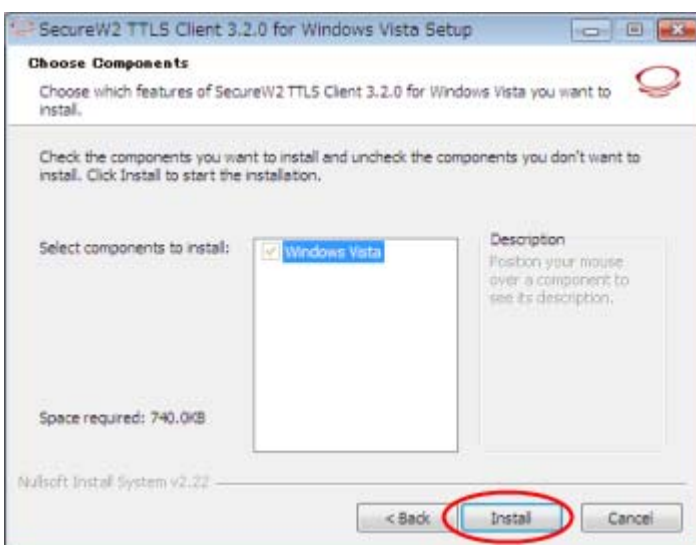
Click the “OK.”



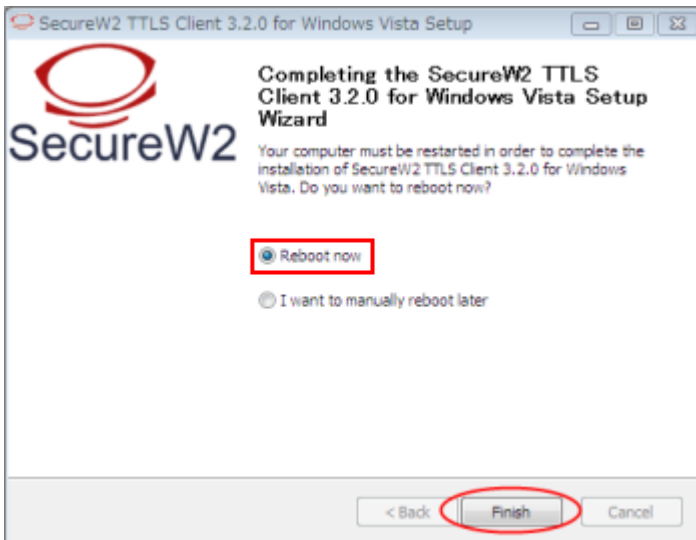
Click the “Next.”



Click the “I Agree.”

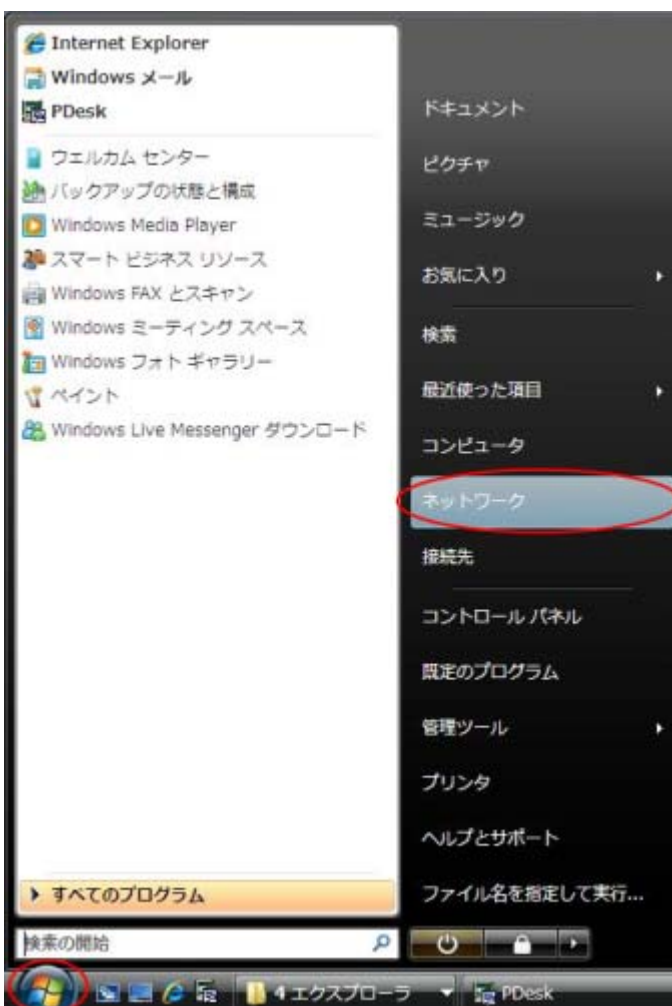


Click the “Install.”

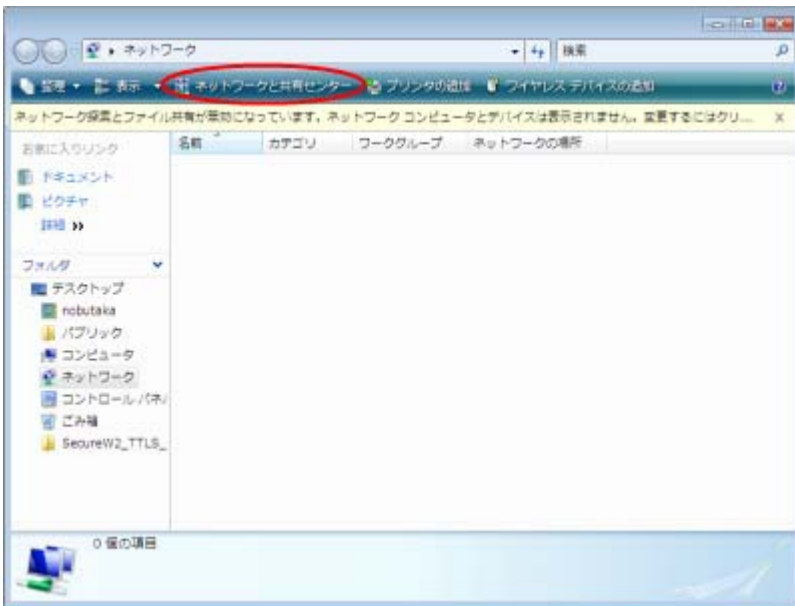


Check the “Reboot now” and click the “Finish.”
Then computer will restart.

2. About Wireless LAN setup (Initialization)



→Click the “ネットワーク.”



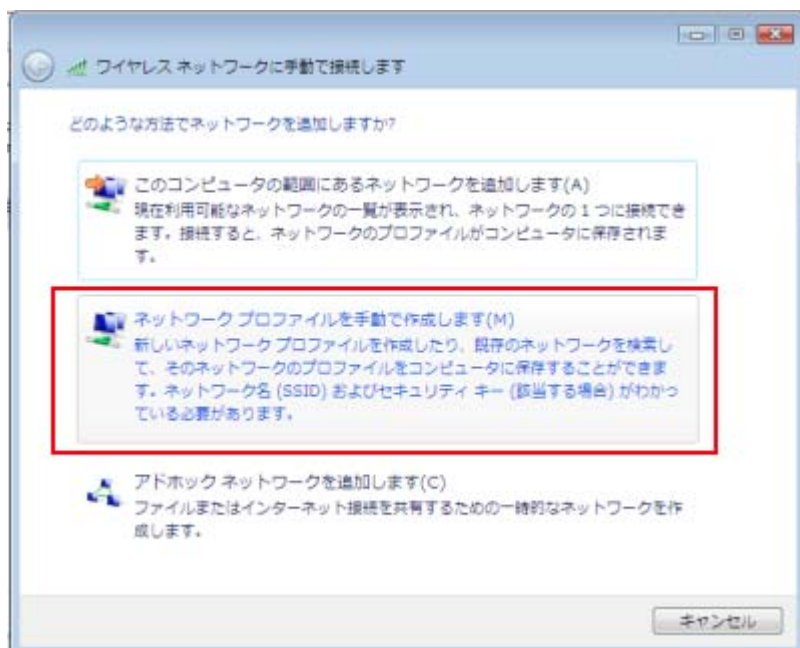
Click the “ネットワークと共有センター.”



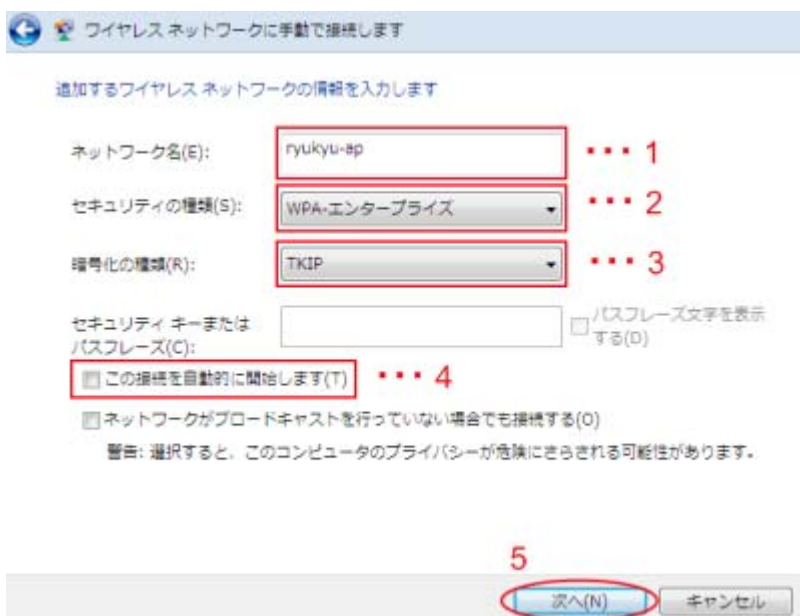
Click the “ワイヤレスネットワークの管理.”



Click the “追加.”



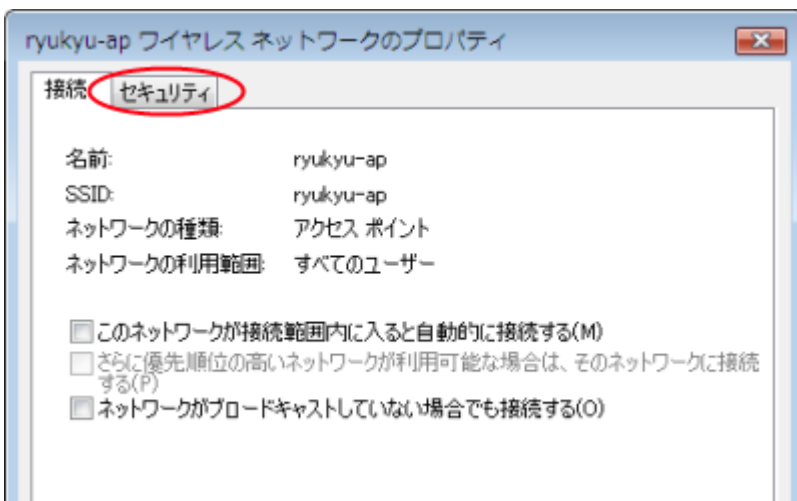
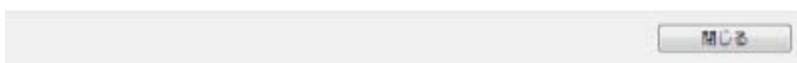
Click the “ネットワークプロファイルを手動で作成します?”



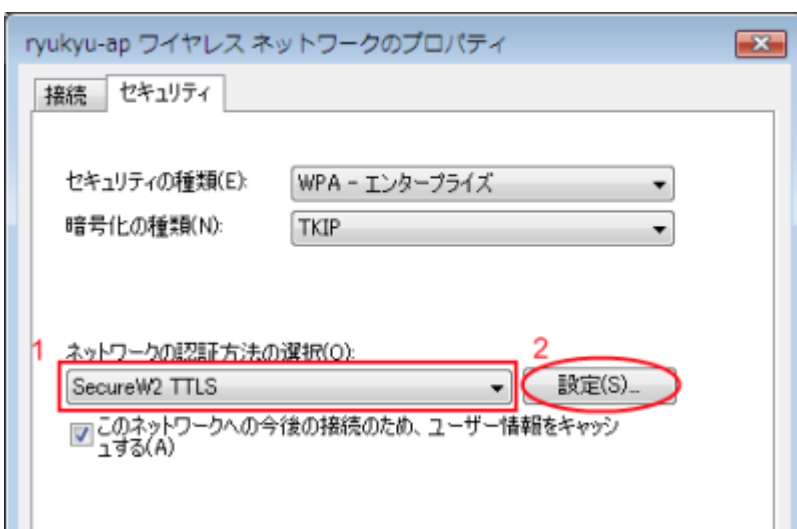
1. ネットワーク名：“ryukyu-ap”
2. セキュリティの種類：Choose “WPA-エンタープライズ.”
3. 暗号化の種類：Choose “TKIP.”
4. この接続を自動的に開始します：Don't check.
5. Click the “次へ.”



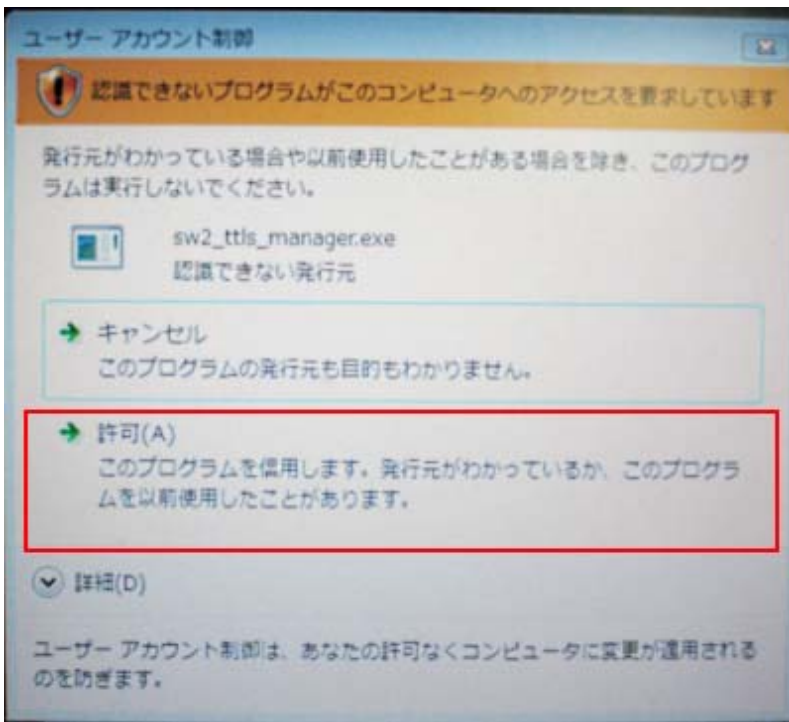
Click the “接続の設定を変更します.”



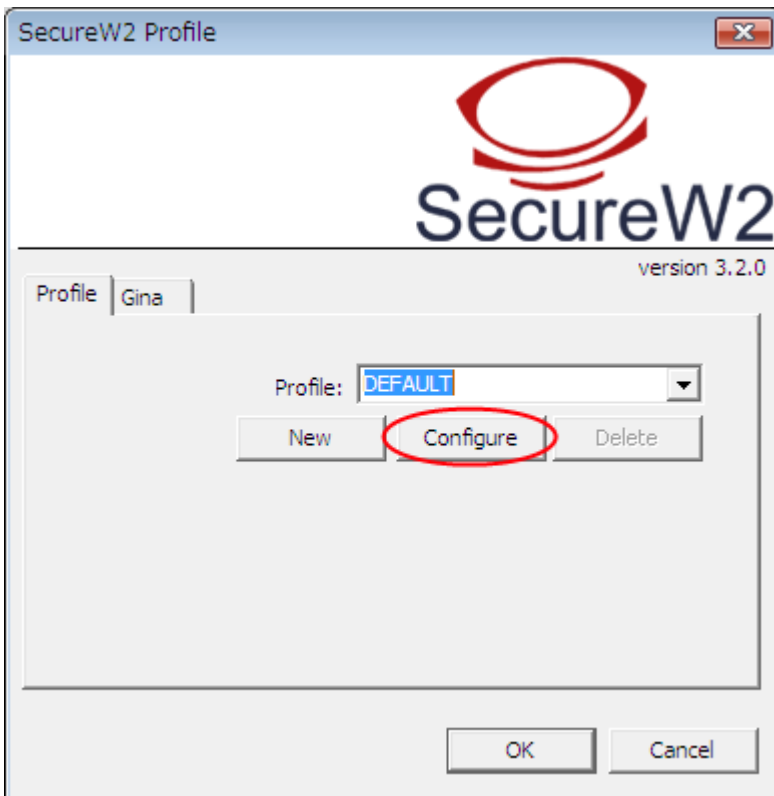
Click the “セキュリティ.”



1. ネットワークの認証方法の選択：Choose “SecureW2 TTLS.”
2. Click the “設定.”



Click the “許可.”



Click the “Configure.”



1. Don't check the "Use alternate outer identity:"
2. Choose "Certificates."



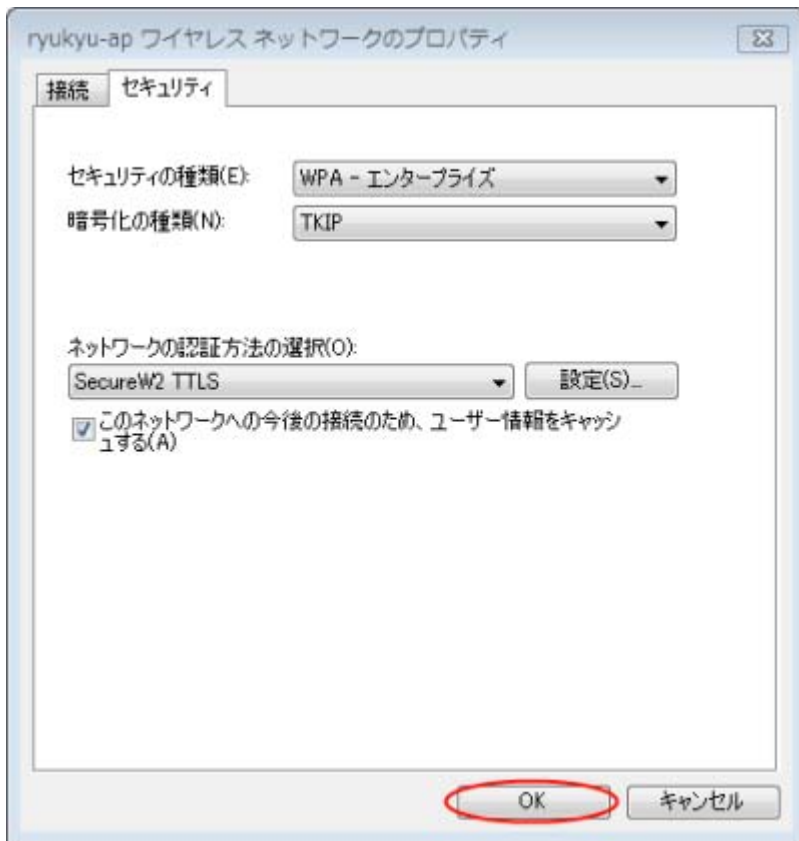
1. Don't check the "Verify server certificate."
2. Click the "Authentication."



1. Select Authentication Method : Choose the “PAP.”
2. Click the “User account.”



1. Please check the “Prompt user for credentials.”
2. Click the “OK.”



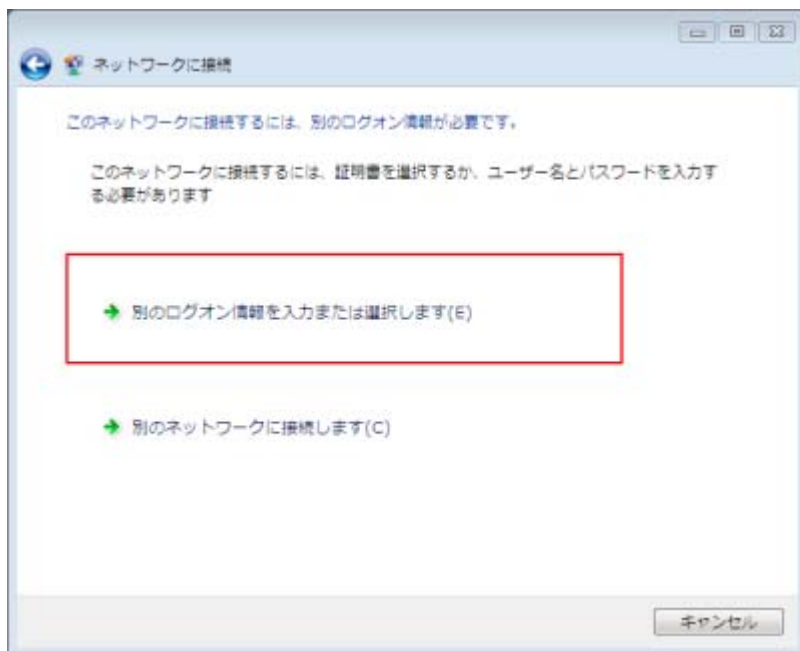
Click the “OK.”



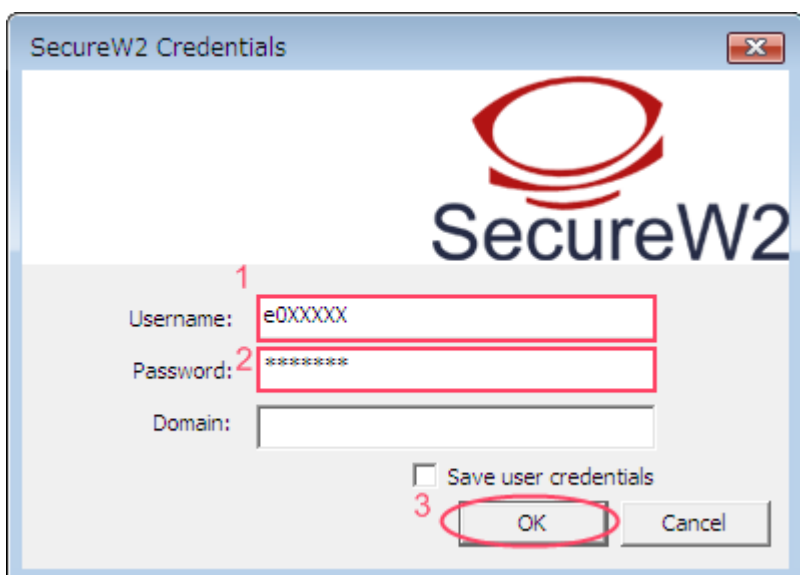
Click the “接続します.”



Choose “ryukyu-ap” and click the “接続.”



Click the “別のログオン情報を入力または選択します。”



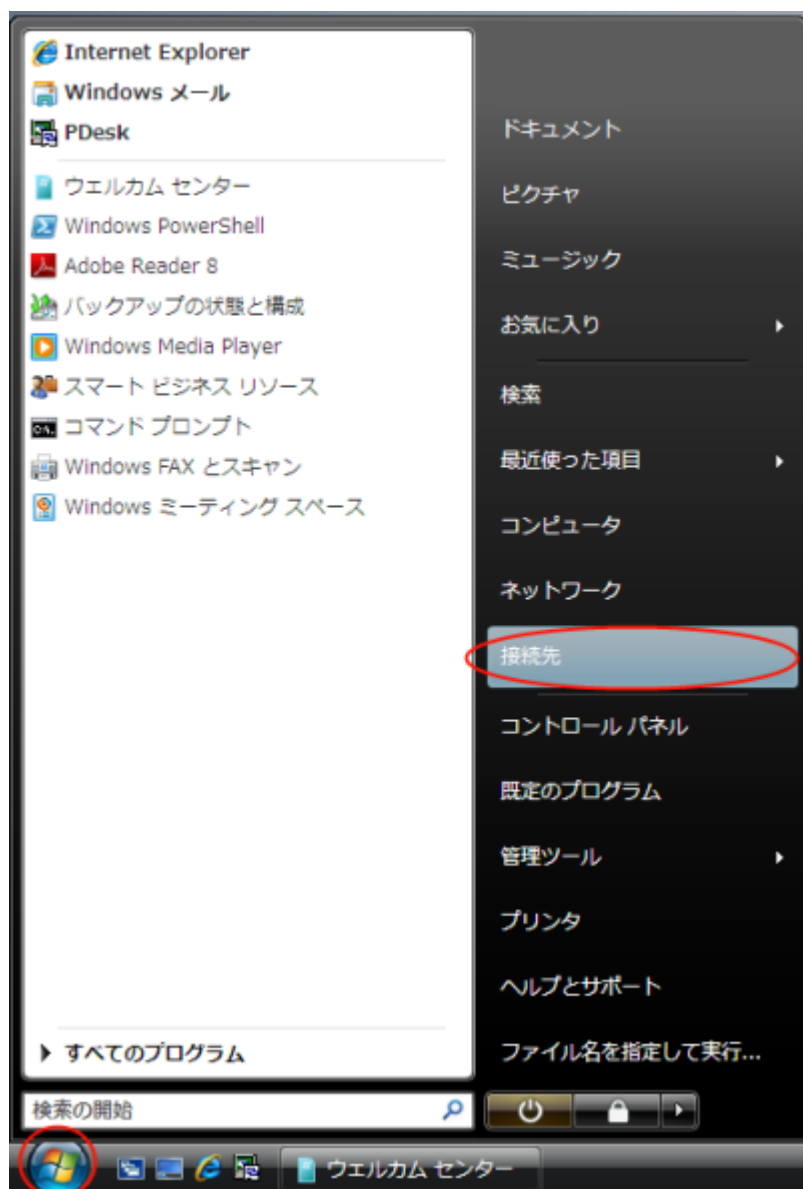
- 1、 2. Input your User ID and Password which were given from Computing and Networking Center.
3. Click the “OK.”



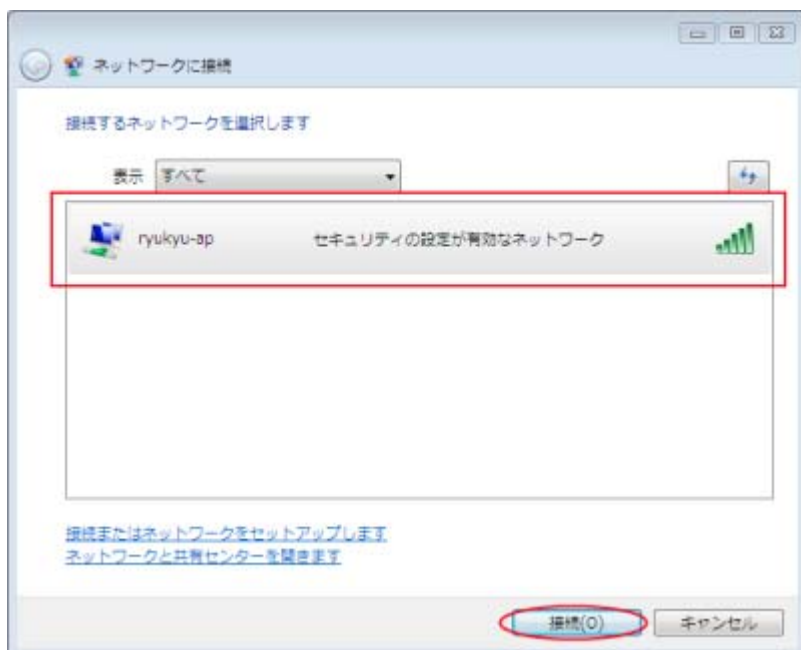
When the screen says “ryukyu-ap に正しく接続しました” connection is end.

※ If you have setup before, please click the “接続先.”

3. Wireless LAN Setup (Not initialization)

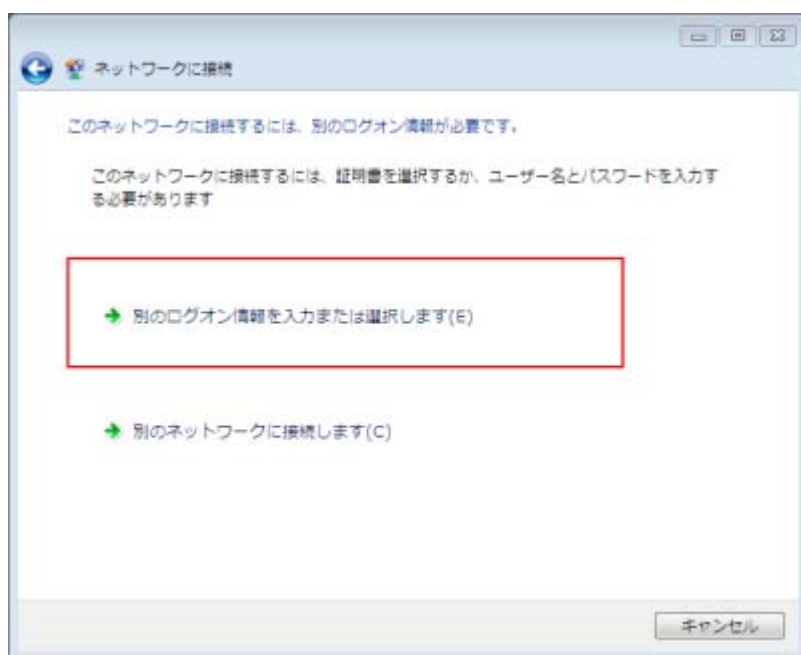


→Click the“接続先.”



Choose “ryukyu-ap” and click the

“接続.”



Click the “別のログオン情報を入力または選択します.”



- 1、 2. Key your User ID and Password which were given from Computing and Networking Center.
3. Click the “OK.”



When the screen says “ryukyu-ap に正しく接続しました” connection is end.

Attention

- ※When you setup Wireless LAN, you need Wireless LAN card and Wireless LAN driver which respond WPA.
- ※Some Wireless LAN cards respond WPA by updating, and others don't respond.

If you have a question about Wireless LAN, please call 8947
<http://www.cc.u-ryukyu.ac.jp>
admin@cc.u-ryukyu.ac.jp